

SAMSUNG

Samsung
SMART Home



As Easy As
Your Kid Goes

Samsung Smart Home System

Stylish Design _ iF Product Design Award

Easy Usage _ Easy icon & UI that anyone can use

Enhanced Security _ Expanding the secured zone

Easy Installation _ Wall mounting type



SHT-7327

Samsung Smart Home System

SHT-7327

Features

- 7" full touch screen and user-friendly GUI
- Easy to use with big buttons
- Compatible to up to 8 security sensors
- Aesthetics and ergonomic in product design (2012 iF product design award)

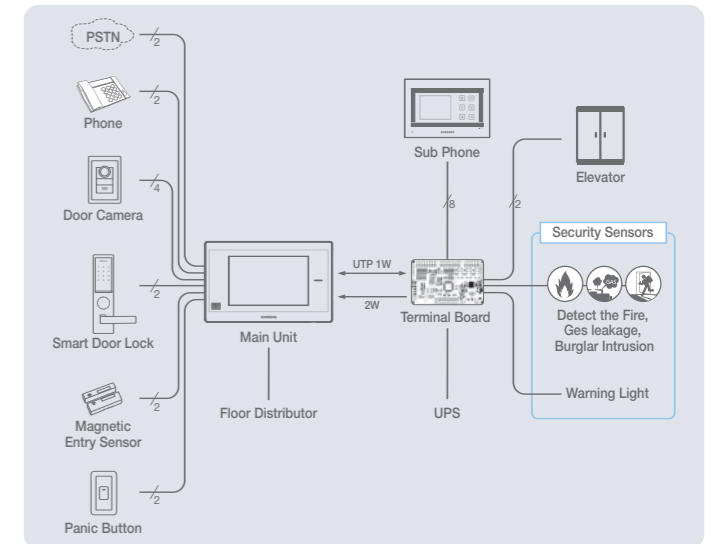
Functions

- **Security**
 - Home security (burglar, fire, gas leakage, etc.)
 - Directly notice to guard office for emergency security mode
- **Convenience**
 - Door answering & monitoring
 - Telephonic communication (guard office, households)
 - Don't disturb mode
 - Use house phone to talk with the visitor and unlock the door
 - Announcement / Notification
 - Save the visitor's image
 - Elevator call

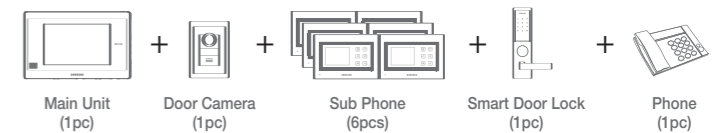
Specifications

Power	UPS INPUT DC17V~24V
Power Consumption	30W
Display	7" Color TFT LCD& Touch Screen
Size	276.9x185.1x28.5mm (WxHxD)
Weight	950g
Installation	Wall Mounting
Type	Hands-free Type

System configuration



System Scalability



Product Components

Model Code	Description
SHT-7327XM/CN	Main Unit
SHN-T8327XM/CN	Terminal Board
SHT-CN510/EN SHT-CA510/EN	Door Camera
SHT-7104EM/CN	Sub Phone
SHT-5180XL/EN SHT-5181XL/EN	Main Entrance Phone
SHT-552XS/EN	Security Phone
SHT-5700	Main Control Unit

SEOUL COMMTECH CO., LTD.

www.samsung-homenetwork.com
sales.ezon@samsung.com

Copyrights (c) 2012 SEOUL COMMTECH CO.,LTD All right reserved.

2012. 2.