

**pronto**



Feel free to take control

**PHILIPS**  
sense and simplicity



# Imagine

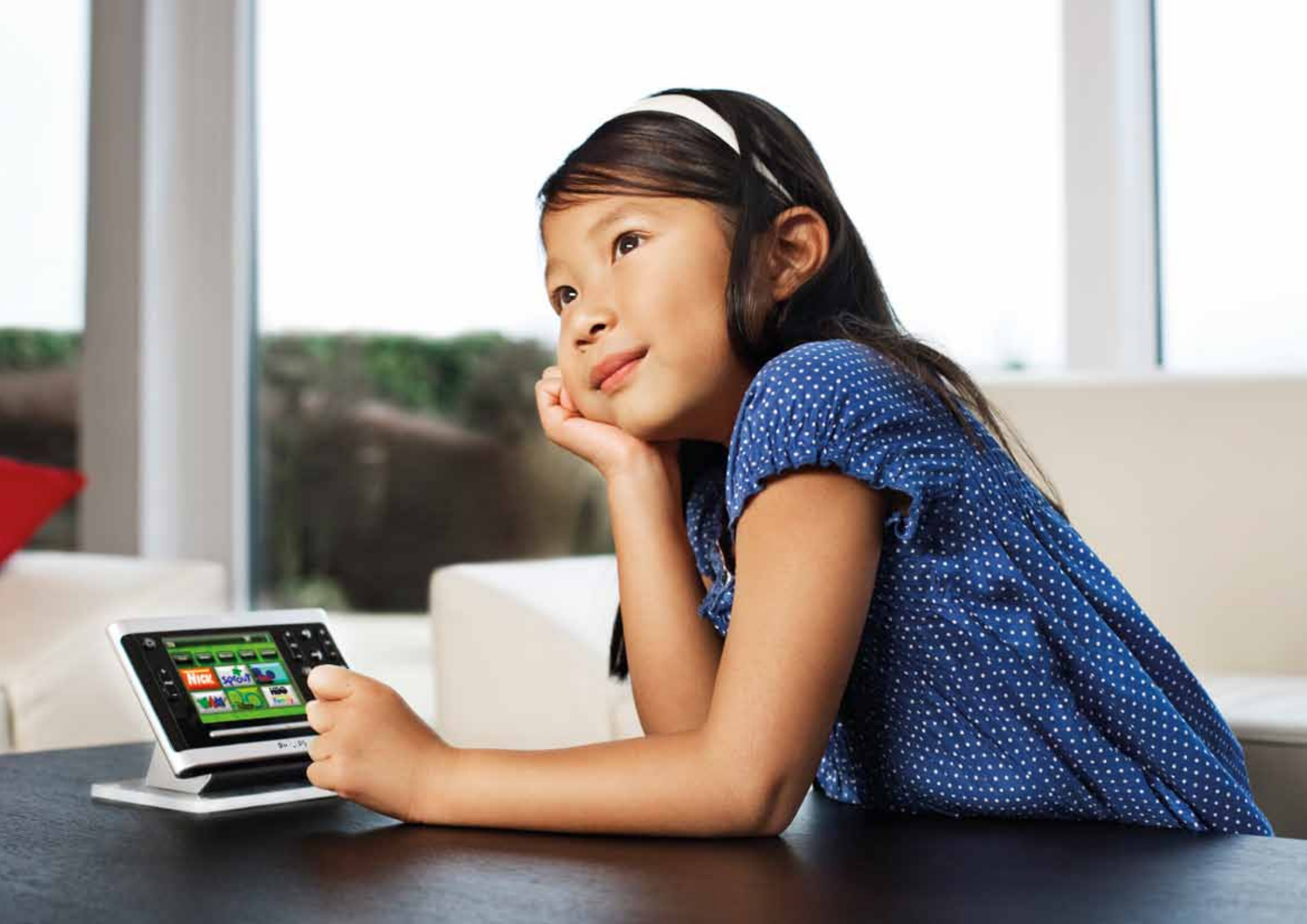
what you can do with  
one touch

With just one touch of a finger, you take over. A Philips Pronto Control Panel lets you control your living and working environment simply and intuitively, because you are working with exceptional and advanced technology. Our Pronto touch screen remote controls provide an extremely flexible solution for operating audio, video and home automation, all from one device. In fact, it's fully personalized to meet your needs.

Designed by installers,  
made by Philips









## David, 41. Architect and proud dad.

"I'm usually very busy working on my new plans in my office, but Kim can find her favorite cartoon channel all by herself. The Pronto is exceptionally handy with large icons, clear graphics, it's just perfect. I wanted a top quality, high-end control panel that's also fine to use. The fact that my daughter was able to use the Pronto so quickly, shows how highly user friendly this control panel really is."

### *Everybody can use the Pronto thanks to the personalized interface*

*Make controlling your devices as easy as you want by only showing the channel icons that matter. Have full control with one touch of a button. Intuitive and powerful - this is sense and simplicity.*

#### **TSU9600**

- Optimal mix of buttons and touch screen
- See only the buttons you need with a personalized interface
- Control multiple devices with a single touch









## Peter, 42. Football fan and entertainer.

"My friends love to come over and watch the game. They know that at my place, it will be just a bit more exciting than watching from their couch at home. The Pronto certainly has a lot to do with that. Together we get totally wrapped up in the tension of the game and you can just feel the adrenalin in the room. Actually, we forget the Pronto is there, and I don't even realize I'm using it because it always does exactly what I want without me even thinking about it! Oh wait, I have to go, the game is starting!"

### *Now this is what I call entertainment*

*Enjoy the game or that new movie with just one touch of a button of the Pronto. Dim the lights, lower the screen and have your movie database or all your favorite sport channels appear. No hassle, only convenience. Go on, enjoy yourself.*

#### **TSU9800**

- Ergonomic design for both one- and two-handed control
  - Control multiple devices with a single touch
  - Search and select with intuitive rotary cursor











## Sofia, 36. Social animal and confirmed sceptic.

"Wow. That pretty much sums it up! The music, the lighting, the security, wherever you are in the house, everything is under control. Giving our friends a warm welcome is important to me. With the Pronto, that's a total experience time and again. Ben was crazy about it straightaway and to be quite honest, I didn't see the point of it at first. The Pronto and its ease of use convinced me and now I'm its biggest fan!"

### *Feel secure and in control at home thanks to the Pronto*

Watch on the screen what's going on at the driveway via a network camera. Switch the lights on in the dining room and set the mood when your guests arrive. Multi-room control made reliable and easy with a Pronto touch screen control panel.

#### **TSU9600**

- Razor-sharp color display with vivid colors
- Full two-way control
- IP based technology







## Nina, 31. Gallery owner and perfectionist.

"Anyone coming into my gallery should get a feeling of timelessness. Escape briefly from the daily bustle and enjoy being swept away by a work of art. Experience the emotion of that moment. I can use the Pronto to illuminate any work of art perfectly and show it to its best advantage. That's technology at its best, exactly as it should be. Clever solutions like this give my gallery that extra touch. And our success proves it."

*Be in control of the lighting and climate  
when it's needed, where it's needed*

*It's your scene, you are in full control. Read on the Pronto  
what's happening thanks to the two-way feedback.*

*Set the right spirit with your playlist selection.*

*Amaze with its sleek design and effortless control.*

### **TSU9400**

- Designed for easy control on the go
- System feedback via dynamic 2-way user interface
- Pre-configured lighting control (Lutron RadioRa)









## Francisco, 35. Hard to please and Max's boss.

"Max has such a will of his own. That's to say nothing of his tremendous sense of timing, which is probably something that he picked up from me. You see, I also like to have things happen then and there. When I go out for a walk, for example. With just one touch of the Pronto, I have the entire house under control. The lights and the heating go off, while the security system comes on. That feeling of security and control is very important to me. It's all sorted out with a single touch on the screen, so I really feel at home in my house."

### Going out?

*As complex as your home control system may be, the all on – all off button makes you leave and come home in peace of mind.*

*With Pronto, control everything in your house. Yes, even check the weather forecast to know if you need sunglasses or an umbrella.*

*With the wall mountable option, no cables or clutter are visible.*

#### **TSU9800**

- Designed for wall mounting
- Largest portable touch screen of the Pronto line
- Full house control with dynamic 2-way user interface











## Mark, 55. CEO and music devotee.

"Enjoying myself in peace and quiet with my music collection at home is something I can look forward to all day. When I get home from work, I like to relax for a while in my favorite chair with a nice piece of music. I know the Pronto will give me total control with just one touch of a finger. Listening to my music in calm surroundings, taking it easy and letting my mind come to rest is priceless. I never make concessions when it comes to quality, simply because my personal time is valuable."


### *Immerse yourself*

*With direct access to all your music and videos in the palm of your hand, the Pronto treats your senses well. Have optimal sound settings programmed. And relax with the convenient grip of a one touch control panel that can be operated with a single hand.*

#### **TSU9300**

- The perfect mix between powerful control and portability
  - Extra slim design for single-handed operation
  - High resolution color touch screen with superb contrast





# Designed by installers, made by Philips, embraced by partners

The ProntoScript technology allows not just standard one-way control, but also two-way integration with virtually all your home automation equipment, whether it is lighting, HVAC (Heating, Ventilation and Air Conditioning), A/V servers and components, or web-based information like weather forecast and RSS-feeds. Leading manufacturers in these domains have partnered with Pronto to create enriched interfaces.



Pronto helps you control a wide range of elements all around your house



### Lighting & Automation

Control lighting scenes, moods & individual dimmers with on-screen feedback



### Multi-Room

Control your entire multi-room media system in any room



### HVAC

Adjust climate control and monitor temperature in any room



### Web & IP

Access and monitor live web info and security images in the palm of your hand



### A/V Media server

Control media playlists and view status without the need of a television



### A/V components

View the active status of A/V devices, see for example volume level, mode or tuner frequencies





**TSU9300**



**TSU9400**



**TSU9600**



**TSU9800**

	TSU9300	TSU9400	TSU9600	TSU9800
Display	2.8" QVGA	3.5" QVGA	3.7" VGA	6.4" VGA
Wireless Control Technology	WiFi	WiFi	WiFi	WiFi
Local IR Control	•	•	•	•
Non Line of Sight IR Control	•	•	•	•
I-Way RS232 Control	•	•	•	•
Media Center Entertainment PC Control	•	•	•	•
Check AV-System Power Status	•	•	•	•
Full 2-Way Control (ProntoScript)		•	•	•
Wall mountable			•*	•

\* see accessory line Pronto

## Extenders

*To support total home control and multi-room AV installations, two types of extenders are available to seamlessly integrate with the Pronto touch screen control panel TSU9300, TSU9400, TSU9600 and TSU9800.*

*The extenders enable control over your home system throughout the property. Thanks to the wireless WiFi technology in the Pronto control panels there is no need any more to point at the TV, DVD or AV receiver. Wherever you are in the house. A convenient solution for your home setting, the Pronto RFX9400 and RFX9600 also allow your equipment to be stored and hidden, still making sure you are in control!*



### **RFX9400**

*This wireless extender controls all your home equipment through infrared. Thanks to its size, it is a flexible and compact solution.*



### **RFX9600**

*This powerful, rack mountable extender can control not only your AV-system but also your blinds, projector screen, ... via the IR, serial, power sensing and relay outputs.*



©2010 Koninklijke Philips Electronics N.V.

All rights reserved. Reproduction in whole or in part is prohibited without the prior written consent of the copyright owner. The information presented in this document does not form part of any quotation or contract, is believed to be accurate and reliable and may be changed without notice. No liability will be accepted by the publisher for any consequence of its use. Publication thereof does not convey nor imply any license under patent- or other industrial or intellectual property rights.

[www.pronto.philips.com](http://www.pronto.philips.com)